

Crystal Reports Training

Training goals

- Introduce Crystal Report products and tools
- Develop reports using the report designer
- Discuss setup, installation, configuration and administration of Crystal Enterprise Server
- Discuss security features in crystal reports
- Discuss crystal integration with .NET and the .NET SDK
- Development, configuration and deployment of reports

Table of contents

- Overview: Background
- Overview: Crystal Products / Licensing
- Overview: System Requirements
- Overview: Features
- Lesson 1: Administration / Maintenance
- Lesson 2: Development

Overview: Background

Crystal Reports is a report writing software that was originally created by Crystal Services Inc., which produced versions 1.0 through 3.0. The company was subsequently acquired by Seagate Software, which later renamed itself to Crystal Decisions, and produced versions 4.0 through 9.0. Crystal Decisions was acquired in December 2003 by Business Objects, which has so far produced versions 10, 11 (XI) and the current version 12 (2008).

Business Objects is a market leader in the field of business intelligence. They have 43,000 customers and they have more than 6,200 employees world wide. Business Objects was recently acquired by SAP AG.

Overview: Crystal Products / Licensing

The crystal software suite is made up of three products

1. Crystal Reports – Application for developing crystal reports.
 - Available versions are 6, 7, 8, 8.5, 9, 10, XI, 2008.
 - Available licenses are Standard, Professional, Developer & Enterprise.
2. Crystal Enterprise – Web Server for housing / serving reports.
 - This is the small-medium market version. There are other high end versions available also called Business Objects Enterprise and Business Objects Crystal.
 - Comes with 1 report designer and 5 CAL licenses.
3. SDK and other components – Crystal Viewer, .NET SDK, Java SDK etc.

Note:- [Click here for licensing details](#)

Overview: System Requirements

1. Crystal Reports (Minimum Requirements)

- **Operating system:** Microsoft Windows 2000 SP4, XP, or later
- **Processor:** Pentium II or higher (Pentium III-class recommended)
- **Memory:** 128 MB of RAM (256 MB recommended)
- **Hard disk:** 350 MB of free hard disk space (600 MB recommended)

2. Crystal Enterprise Server (Minimum Requirements)

- **Operating system:** Microsoft Windows 2000 or 2003
- **Processor:** 700 MHz Pentium 3 processor
- **Memory:** 1GB of RAM
- **Hard disk - 2.5GB**

Overview: Features

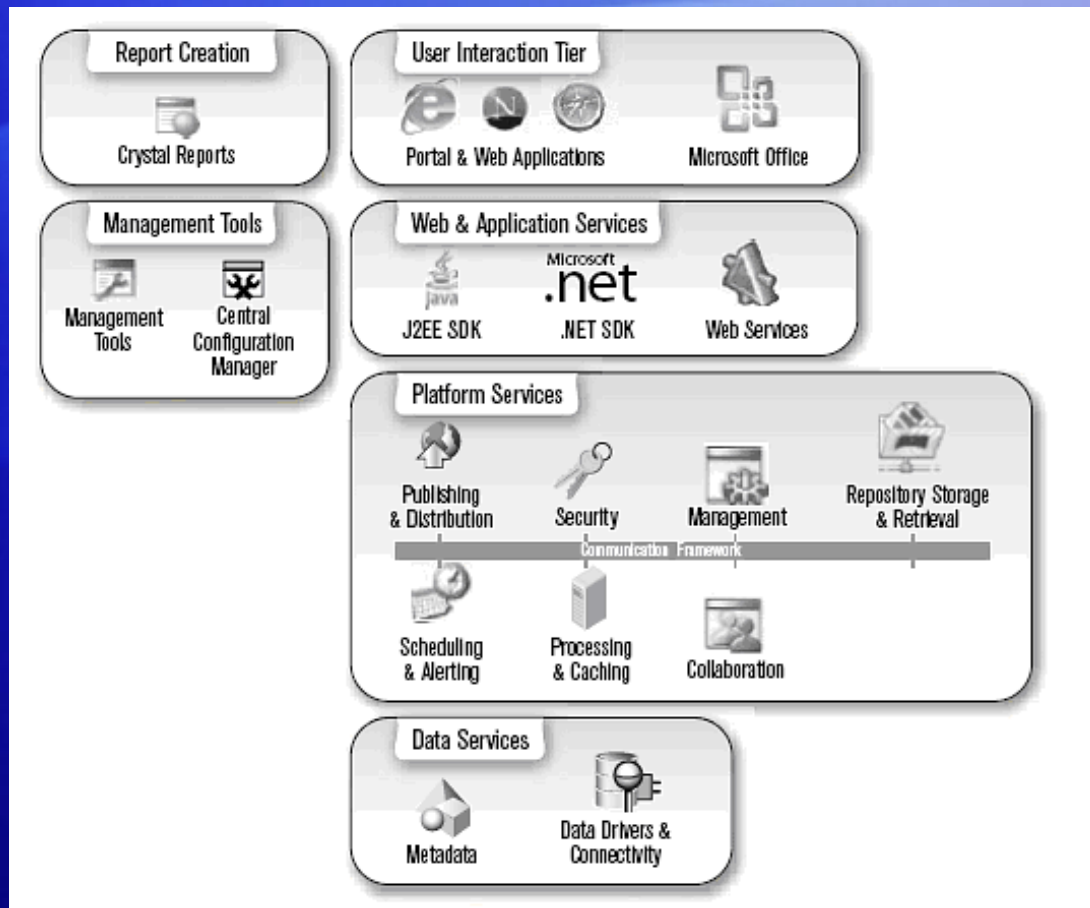
Comes with 35 data drivers. Compatible data sources are:

- Sybase, IBM DB2, Ingres, Microsoft Access, Microsoft SQL Server, MySQL, Interbase and Oracle
- Btrieve
- Spreadsheets such as Microsoft Excel
- Text files
- XML files
- Groupware applications such as Lotus Notes, Microsoft Exchange and Novell GroupWise
- Other data sources accessible through a web service, ODBC, JDBC, ADO, ADO.NET and OLAP

Lesson 1

Administration / Maintenance

Crystal Reports : Functional Architecture



The diagram shows crystal products in action. It shows how the different pieces work together to deliver the report.

The diagram shows crystal administration, development, deployment and configuration tools.

Crystal Enterprise Server



Located under

- Start > Programs > Crystal Enterprise 10

Software installation directory is

- C:\Program Files\Crystal Decisions

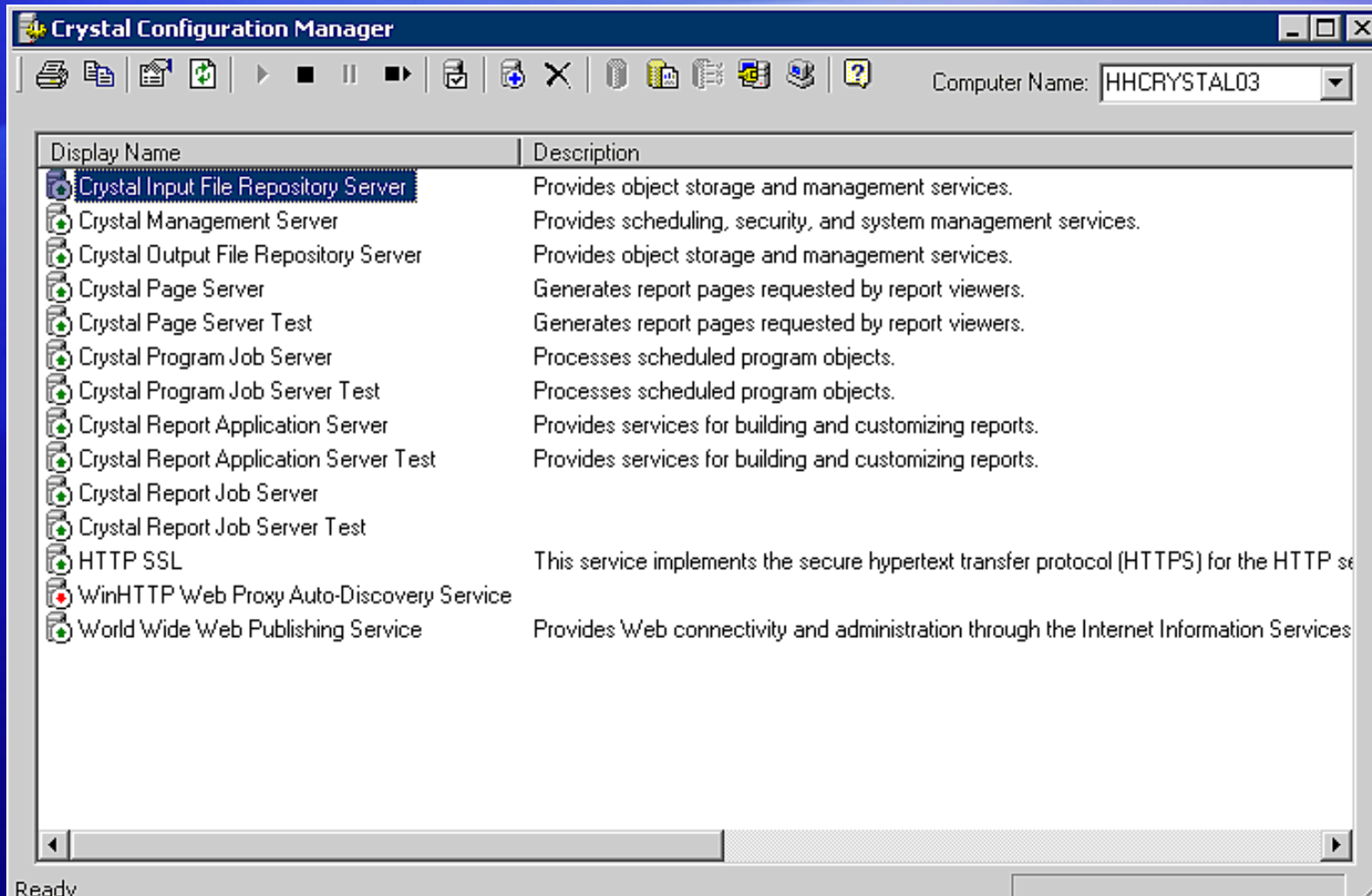
① Crystal Admin Launchpad is located at the URL:

- <http://ServerName/crystal/enterprise10/adminlaunch/en/default.htm>

② Crystal User Launchpad is located at the URL:

- <http://ServerName/crystal/enterprise10/desktoplaunch/en/default.htm>

Crystal Configuration Manager



Miscellaneous Tools

1. Crystal Import Wizard

- Used to import reports from previous versions of Crystal Enterprise

2. Crystal publishing Wizard

- Publish a Crystal Report Definition File (RPT) to the server

3. Store the report on a network share on the server so that it gets backed up

4. Crystal License Manager

- Used to add / remove license keys

Further reading...

Business Objects website

- <http://www.businessobjects.com>

Crystal Reports Resources website

- <http://resources.crystalreports.com/>

Free web seminars

- <http://www.crystalreports.com/events>

Crystal Reports Developer website

- <http://diamond.businessobjects.com/developer/gettingstarted>

Crystal Reports Website

- <http://www.crystalreports.com/>