



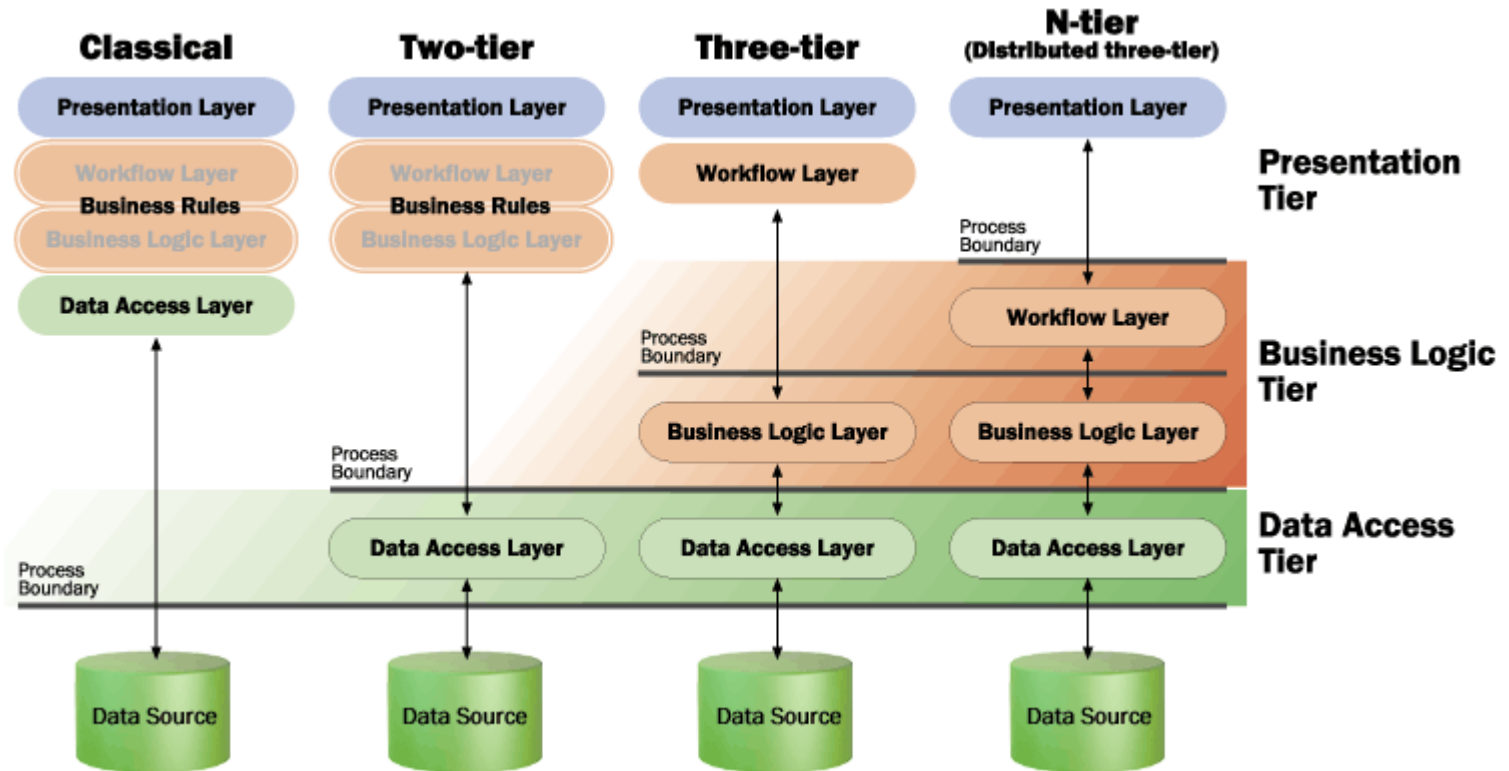
Windows Communication Foundation - Evaluation Demo and FAQ



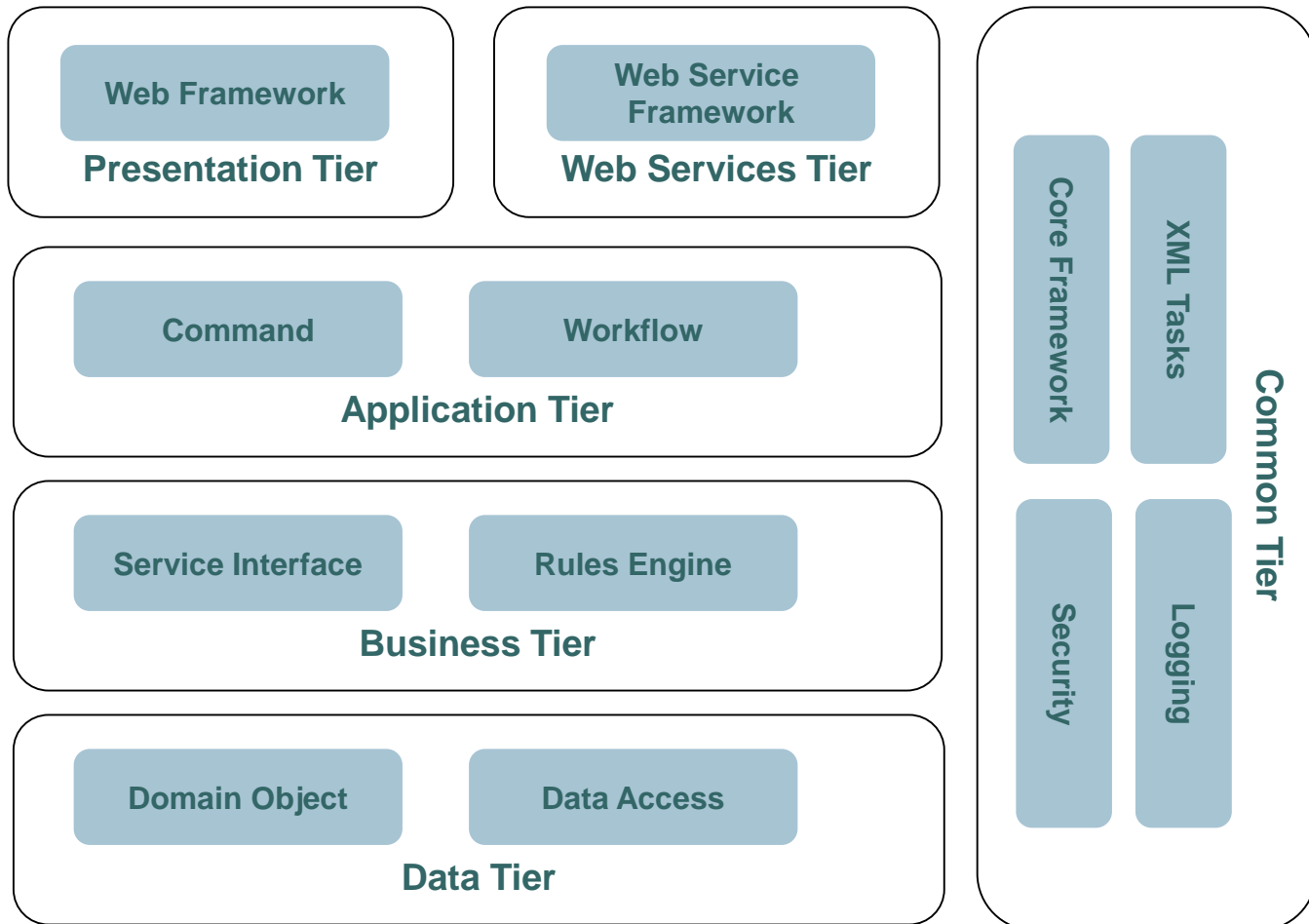
Agenda

- Background : N-Tier Architecture
- Background : SOA Architecture
- Background : Web Service Software Factory (WSSF)
- Background : .NET Framework 3.0
- Overview of WCF
- FAQ: WCF Hosting
- FAQ: WCF Communication
- WCF Usage scenarios
- WCF programming model
- WCF Demo
- Further Reading

N-Tier Architecture

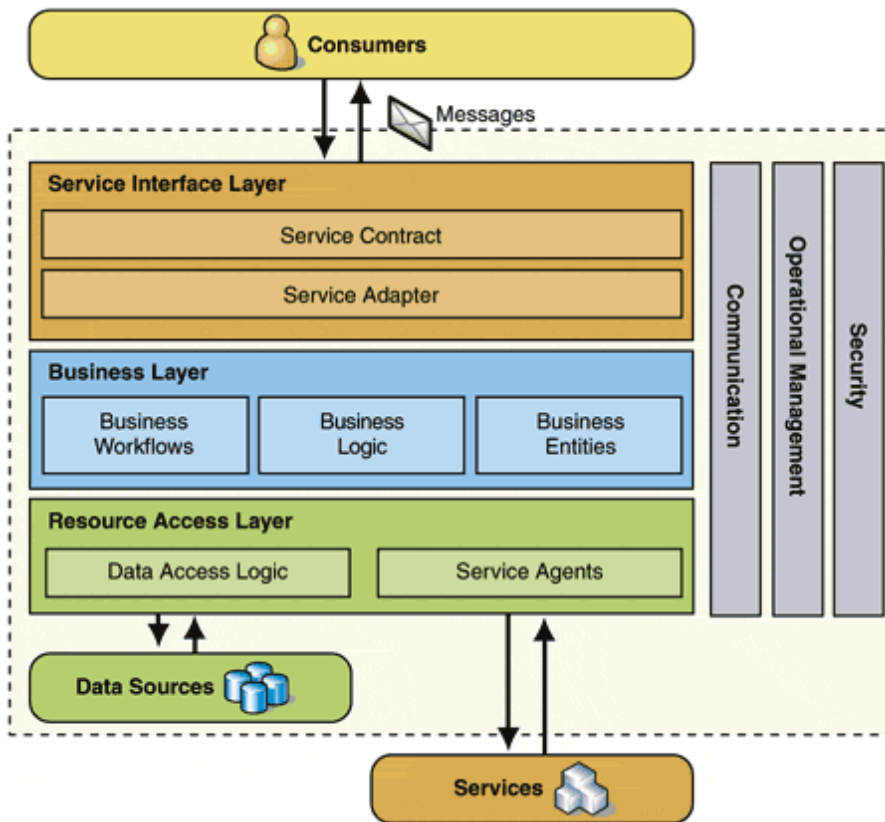


SOA Architecture

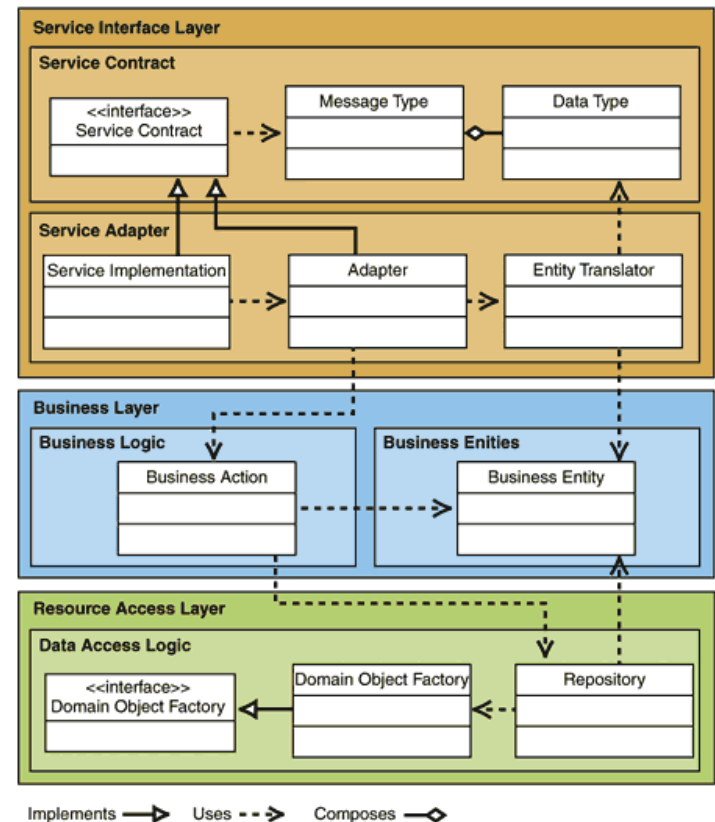


WSSF – Service Factory

Architectural View



Logical View





.NET Framework 3.0

Windows Presentation Foundation
Next generation user experience

Windows Communication
Foundation
Service-oriented development

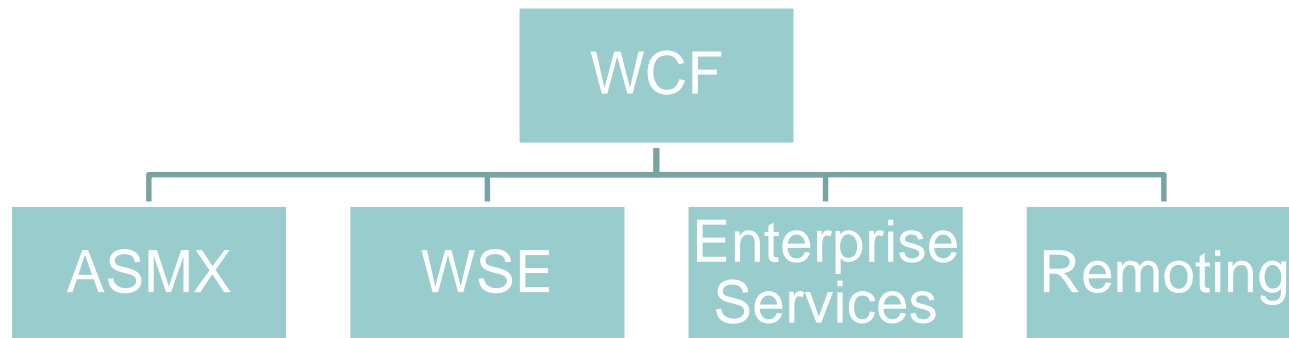


Windows Workflow
Foundation
Business process modeling

“InfoCard”
Digital identity management

Overview – What is WCF?

- Formerly named “Indigo”
- ASMX, WSE, Enterprise Services & Remoting





FAQ : WCF Hosting

Where can it be hosted?

- Windows Service
- IIS
- Dedicated application
- Windows Activation Service



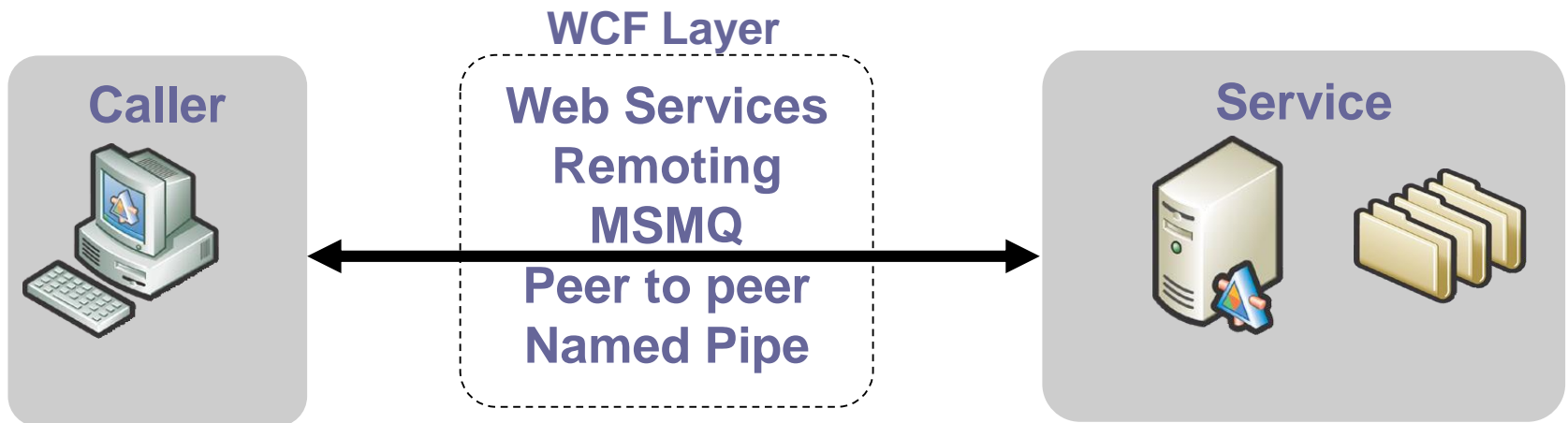
FAQ :WCF Communication

**What communication methods does
WCF support?**

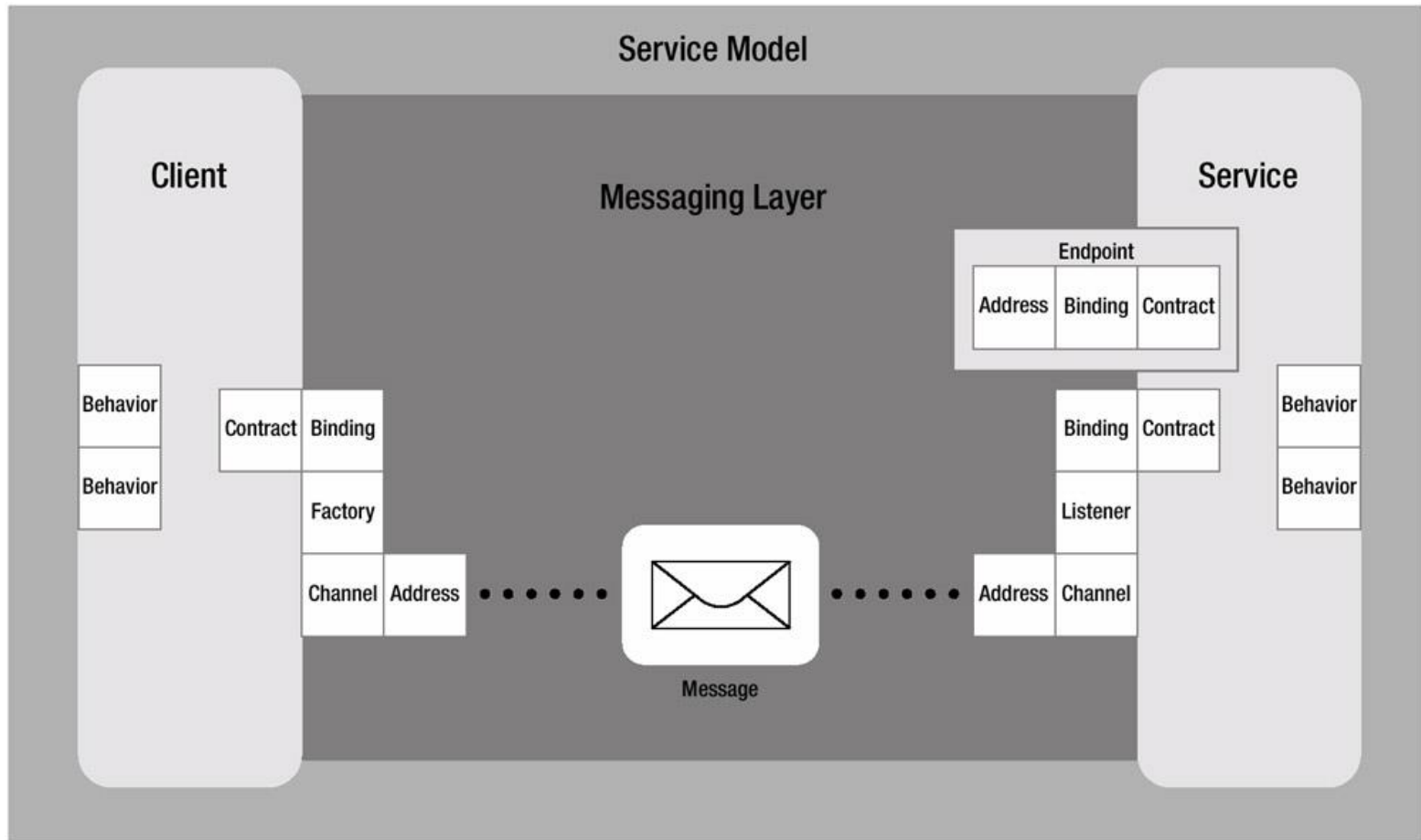
- Web Services
- Remoting
- MSMQ
- Named Pipe
- Peer to Peer

WCF Usage Scenarios

- Typically used for long running processes.
- Provides the communication Layer.
- Suited for disparate environments and systems.
- Reuse existing applications and legacy systems.
- Good for asynchronous processing and transaction based systems.



WCF Programming Model





WCF Demo

- Building WCF application

Service

- Define Contracts
- Implement Contracts
- Define Endpoints
- Host & Run Service

Client

- Generate Proxy from Metadata
- Implement & Run Client



Further Reading

Resources

- Web Service Software Factory** ➤ <http://msdn.microsoft.com/en-us/library/aa480534.aspx>
 - Web Services Enhancement** ➤ <http://msdn.microsoft.com/en-us/library/cc268283.aspx>
 - Web Services Security** ➤ <http://msdn.microsoft.com/en-us/library/aa302390.aspx>
-